

# SP100S UC

## PRENSADORA | CRIMPING

**FINN-POWER**  
Crimping since 1973



Finn-Power SP100 series of side feed crimping machines are designed for crimping especially short and bent fittings - feature that makes them so ideal for crimping for example automotive hose assemblies.

SP100 model has slim crimping head and short master dies. These features enable crimping with shorter die sets. ideal for crimping for example automotive hose assemblies.



Crimping Range: 10 - 46mm



10 tons of crimping force



Hose size up to 1"

### TECHNICAL SPECS

DESCRIPTION	SP100S UC
Hose size	1"
Crimping range $\varnothing$ (mm) <sup>1</sup>	10-46
Die type <sup>2</sup>	SP100
Max opening <sup>3</sup> (mm)	+11/+62 <sup>4</sup>
Master die shoe length (mm)	40
Motor (kW)	3
Crimping force (kN)	100
Number of crimps/hour <sup>5</sup>	1200/2900 <sup>6</sup>
Dimensions	
width (mm)	1074
length (mm)	1504
height (mm)	1866
Weight (kg)	560

### STANDARD DIE SETS

CODE	CRIMPING DIAMETER (MM)	LENGTH (MM)
701817/10	10.0 - 12.0	40
701817/12	12.0 - 14.0	40
701817/14	14.0 - 16.0	40
701817/16	16.0 - 19.0	40
701817/19	19.0 - 23.0	40
701817/23	23.0 - 27.0	40
701817/27	27.0 - 31.0	40
701817/31	31.0 - 36.0	40
701817/36	36.0 - 41.0	40
701817/41	41.0 - 47.0	40
701817/47	47.0 - 54.0	40

1. With standard dies. Crimping range can be increased with special dies

2. See table for standard die set data

3. Add this value to minimum crimping diameter of the die set used. The result is the maximum opening of the machine with die set in place.

4. Die travel / feeding channel

5. Theoretical with 1/2" hose  $\varnothing$  10 mm

6. Full cycle / 10 mm cycle

### OPCIONAL EXTRAS



**LONG LIFE**  
Auto greasing system



**SPEED**  
Quick change and QC Tool base



**HANDS FREE**  
Foot pedal



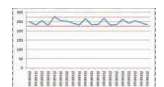
**EASY POSITIONING**  
Mechanical back stop device



**UC1**  
Pressure crimping



**UC2**  
Multi-step crimping



**UC3**  
Data report

### UC CONTROL